

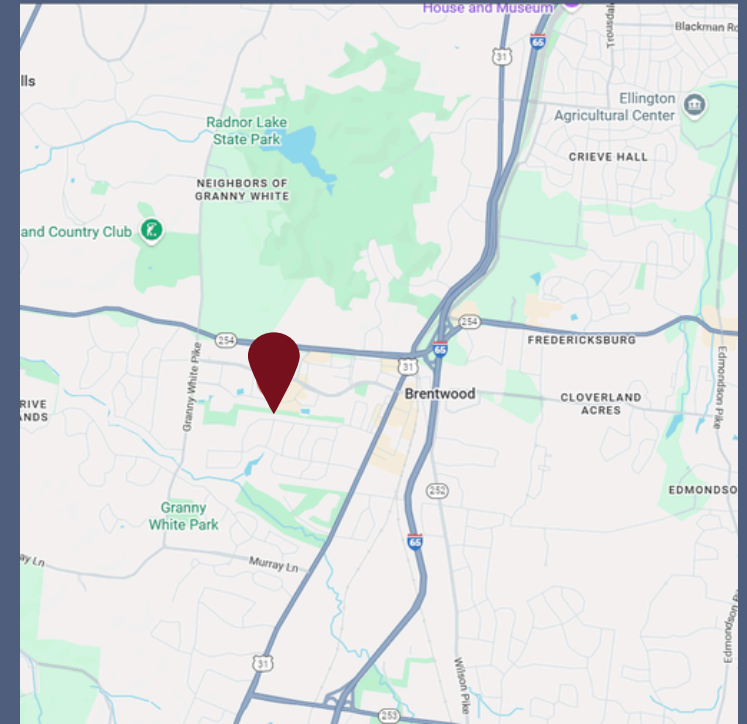


**FOR LEASE || VIRGINIA WAY PLAZA**

5141 Virginia Way | Brentwood, TN 37027

# PROPERTY HIGHLIGHTS

- Renovated lobby, common areas, and restrooms
- Prime location with convenient access to I-65 and I-440
- Minutes from Franklin and Downtown Nashville
- Surrounded by hotels, dining, retail, and banking amenities
- On-site management and building technician
- Free surface parking available equating to 3.5/1,000
- High-end finishes with efficient floorplans



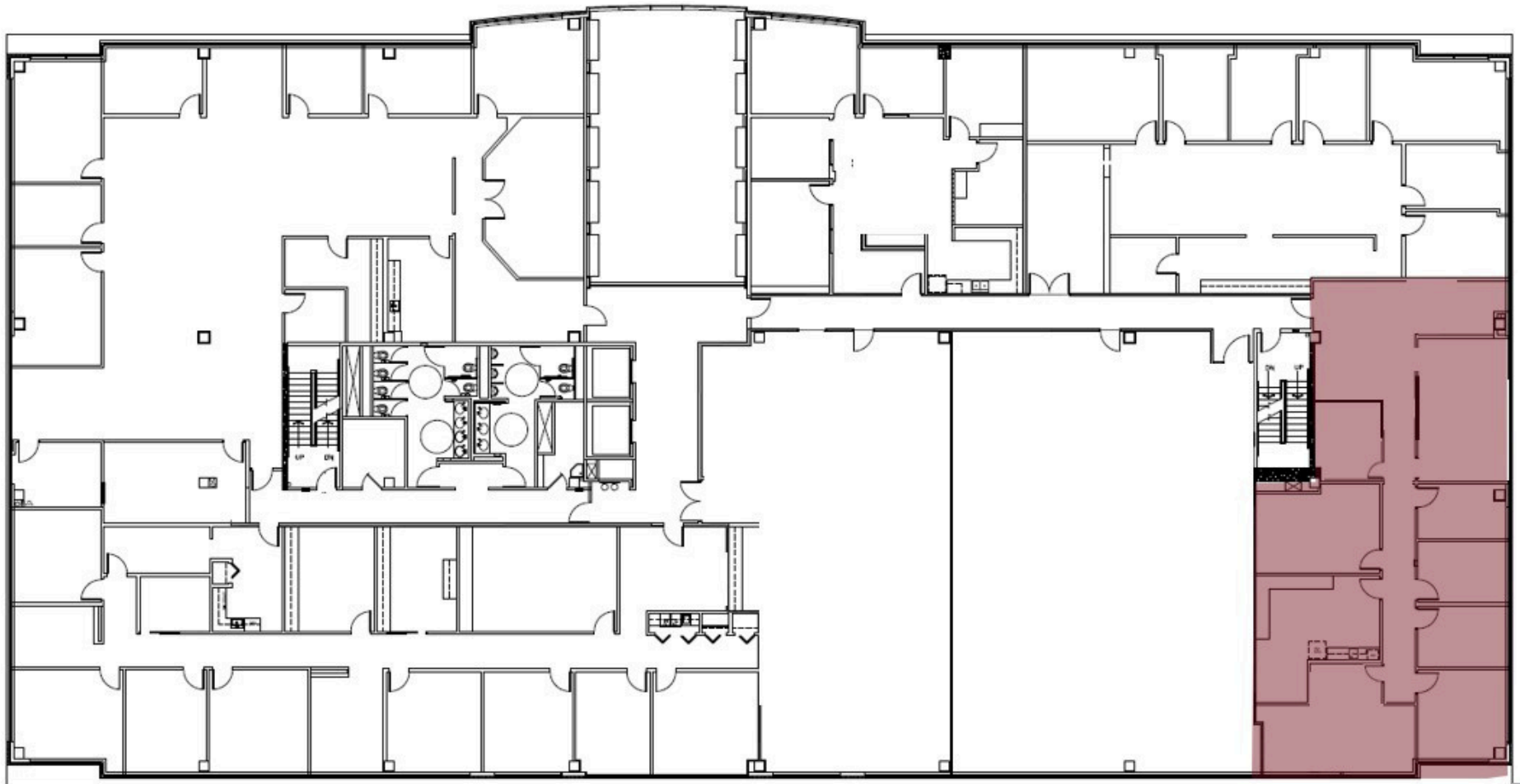
**Virginia Way Plaza** is an 80,000-square-foot, four-story Class A office building in the Maryland Farms business district of Brentwood. Professionally managed, it features high-end finishes, upgraded common areas, new LED lighting, and a secure energy-efficient environment. Tenants enjoy ample parking (3.5/1,000 ratio) with surface and covered reserved spaces, monument signage, and on-site maintenance.

Strategically located in Brentwood, the property offers easy access to I-65 and is minutes from Downtown Nashville and Franklin. Surrounded by restaurants, banks, retail, and other amenities. Virginia Way Plaza provides an attractive, move-in-ready option for companies seeking a prime location.



# VIRGINIA WAY PLAZA

## Floor Plans



Suite 230 | 3,153 RSF



# VIRGINIA WAY PLAZA

## Floor Plans



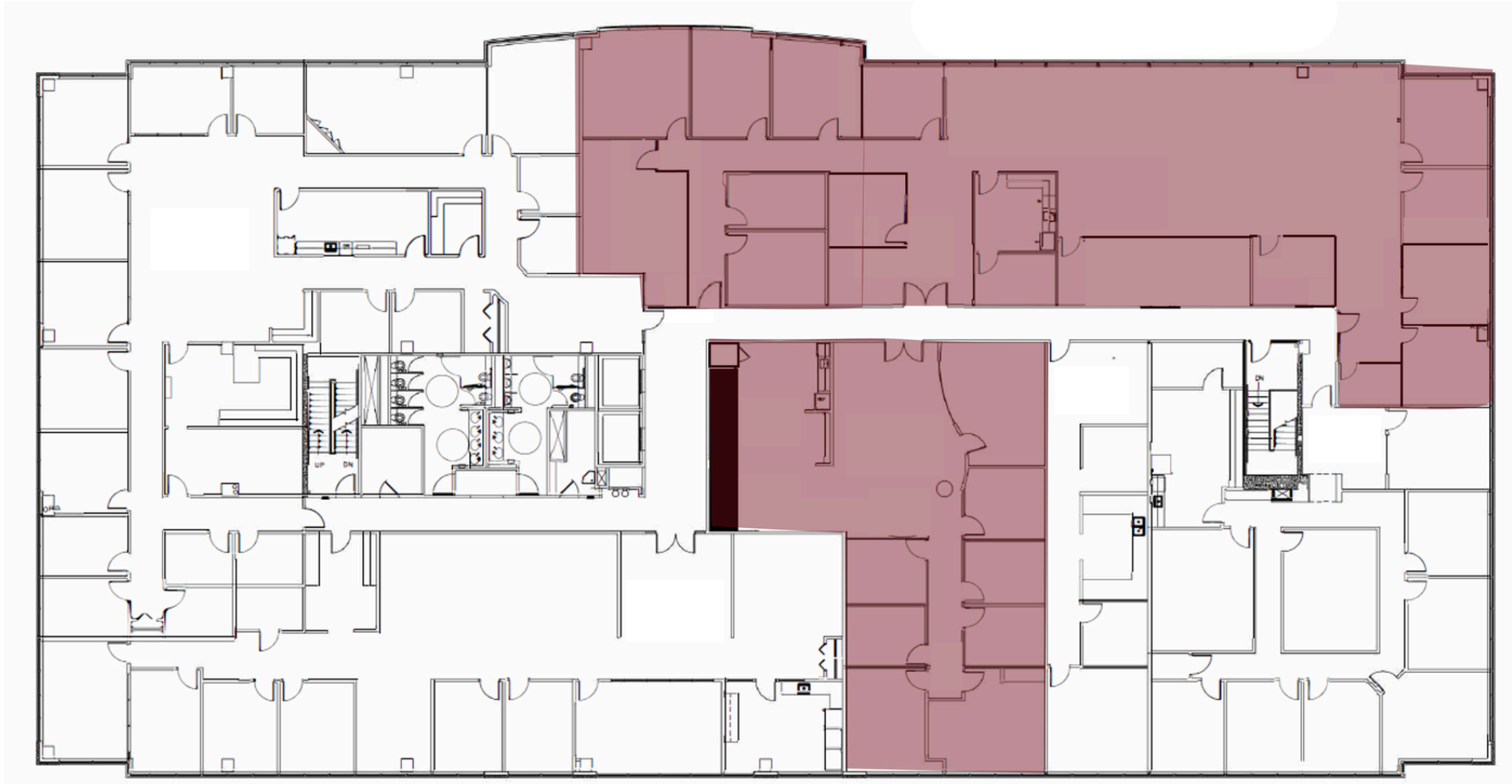
Suite 325 | 1,789 RSF

Suite 300 | 5,000 - 10,987 RSF



# VIRGINIA WAY PLAZA

## Floor Plans



Suite 460 | 2,899 RSF

Suite 410 | 6,722 RSF



For more information, contact:



4521 Charlotte Ave | Nashville, TN 37209  
615.424.4350 | [CardinalPropertyCo.com](http://CardinalPropertyCo.com)

**Victoria Griffith**

615.424.4350 | M  
[Victoria@CardinalPropertyCo.com](mailto:Victoria@CardinalPropertyCo.com)

**EQUITABLE**  
PROPERTY COMPANY

Custom  
Real Estate  
Solutions

3201 Trevor St, Ste 200 | Nashville, TN 37209  
615.654.6980 | [EquitableTN.com](http://EquitableTN.com)

**Land Deleot**

615.948.6807 | M  
[Land@EquitableTN.com](mailto:Land@EquitableTN.com)

**Steele Yancey**

615.306.4099 | M  
[Steele@EquitableTN.com](mailto:Steele@EquitableTN.com)

